

## COPYRIGHT

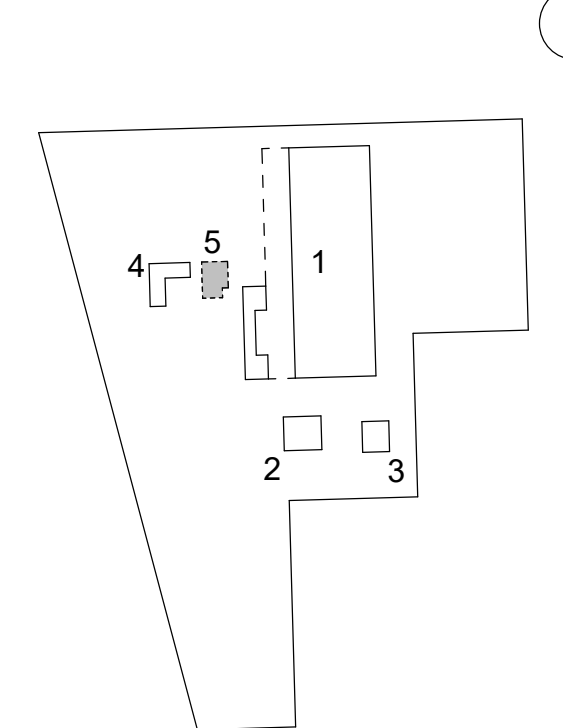
This drawing has been prepared solely for the intended use, thus any reproduction or distribution for any purpose other than authorized by Arcadis is forbidden. Written dimensions shall have precedence over scaled dimensions. Contractors shall verify and be responsible for all dimensions and conditions on the job, and Arcadis shall be informed of any variations from the dimensions and conditions shown on the drawing. Shop drawings shall be submitted to Arcadis for general conformance before proceeding with fabrication.

Arcadis Inc.

## ISSUES

No.	DESCRIPTION	DATE
A	ISSUED FOR SPA - MOD	2025-11-12

## SITE KEYPLAN



## CONSULTANTS

<b>ARCHITECT:</b> <b>ARCADIS</b> ARCADIS INC. 7000 N. FEDERAL HWY. - 2ND FLOOR BOCA RATON, FL 33487 (561) 996-8000 contact: JAY KELLY email: jay.kelly@arcadis.com	<b>CIVIL ENGINEER:</b> <b>ARCADIS</b> ARCADIS INC. 7000 N. FEDERAL HWY. - 2ND FLOOR BOCA RATON, FL 33487 (561) 996-8000 contact: PATRICIA RAMILLO email: patricia.ramill@arcadis.com
<b>LANDSCAPE ARCHITECT:</b> <b>ARCADIS</b> ARCADIS INC. 21 CUSTOM HOUSE ST. - 3RD FLOOR BOSTON, MA 02110 (617) 896-2900 contact: PHIL COLLIERMAN email: phil.collerman@arcadis.com	<b>SITE ELECTRICAL:</b> <b>ARCADIS</b> ARCADIS INC. 451 FANNETT VALLE STREET SUITE 100 HAVERHILL, MA 01830 (978) 851-4211 contact: KEVIN SCHAEFER email: kevin.schaefer@arcadis.com
<b>STRUCTURAL ENGINEER FOR BUILDINGS:</b> <b>JZERNINAC</b> JZERNINAC GROUP 1915 FORUM FL, 3A WEST PALM BEACH, FL 33411 (561) 322-7225 contact: BILLY RAVOLA email: billy@jzerninacgroup.com	<b>STRUCTURAL ENGINEER FOR BRIDGES:</b> <b>LANCASHYONGER ENGINEERING, INC.</b> 2311 NE 34TH STREET FORT LAUDERDALE, FL 33308 (954) 771-0000 CONTACT: LANCASHYONGER EMAIL: LYES@YONGERENGINEERING.COM
<b>MEPP:</b> <b>SEI South Engineering Inc.</b> SMITH ENGINEERING CONSULTANTS 2161 PALM BEACH LAKES BLVD. SUITE 310 WEST PALM BEACH, FL 33411 (561) 646-3011 contact: STEVE P. HOCKMAN email: steve@smithengineeringconsultants.com	

## SEAL

## PRIME CONSULTANT



Suite 307A - 1451 W. Cypress Creek Road  
Fort Lauderdale, FL 33309 USA  
tel 248 936 8000  
www.arcadis.com

## PROJECT

**THE TRAINING AND COMMAND  
CENTER BUILDING**  
3201 W Copans Road  
Pompano Beach, FL

## PROJECT NO:

136677

## DRAWN BY:

Author

## CHECKED BY:

Checker

## PROJECT MGR:

PR/AS

## APPROVED BY:

DF/JK

## SHEET TITLE

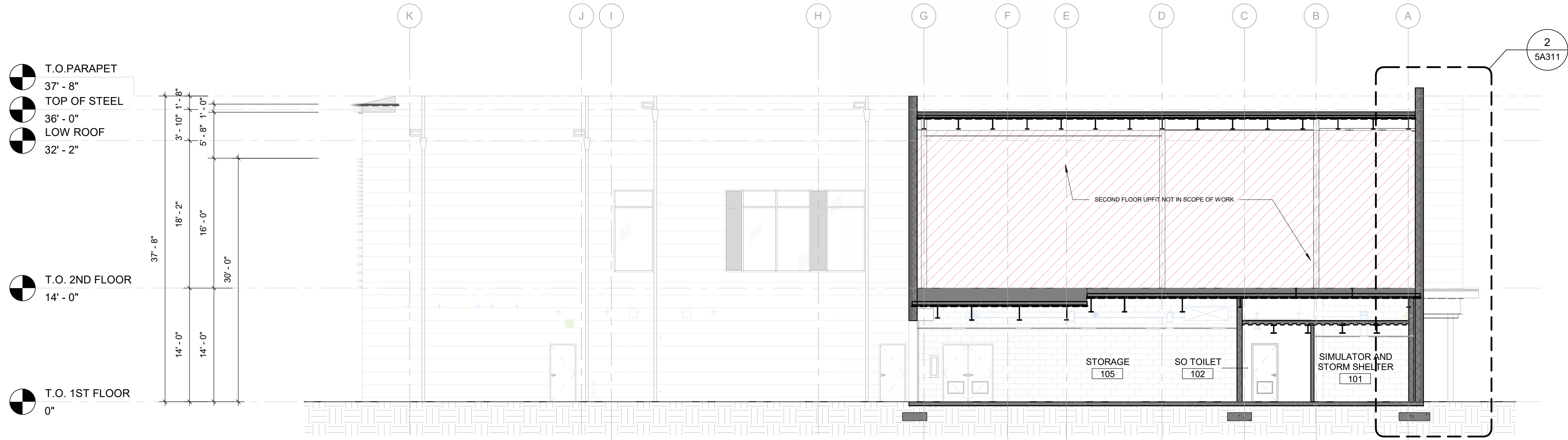
BUILDING SECTIONS

## SHEET NUMBER

5A301

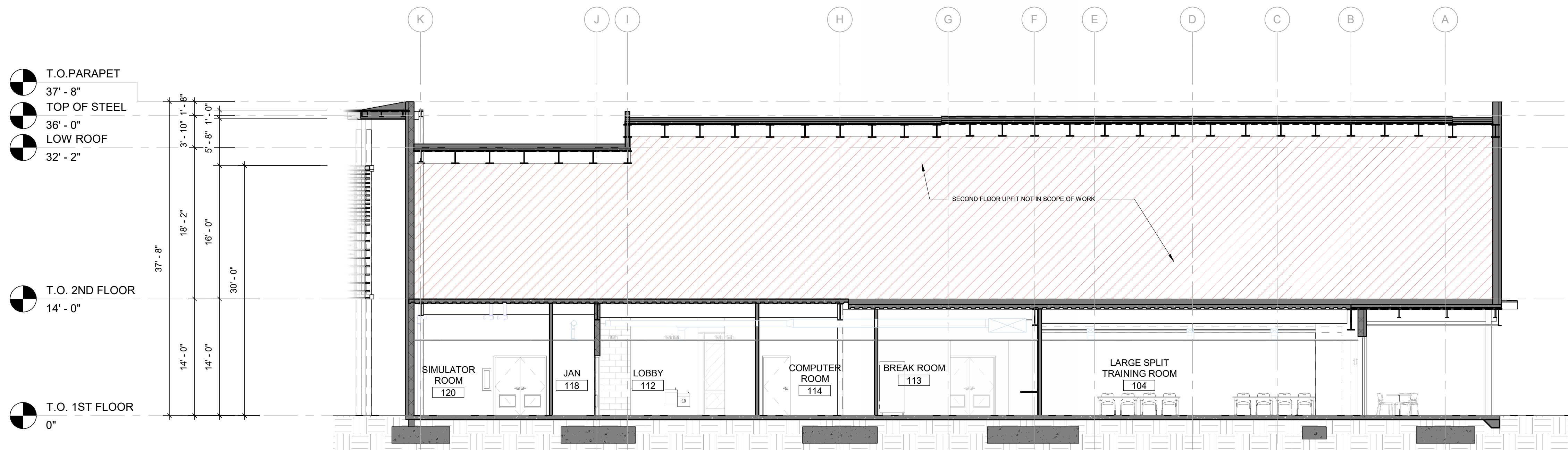
## ISSUE

A



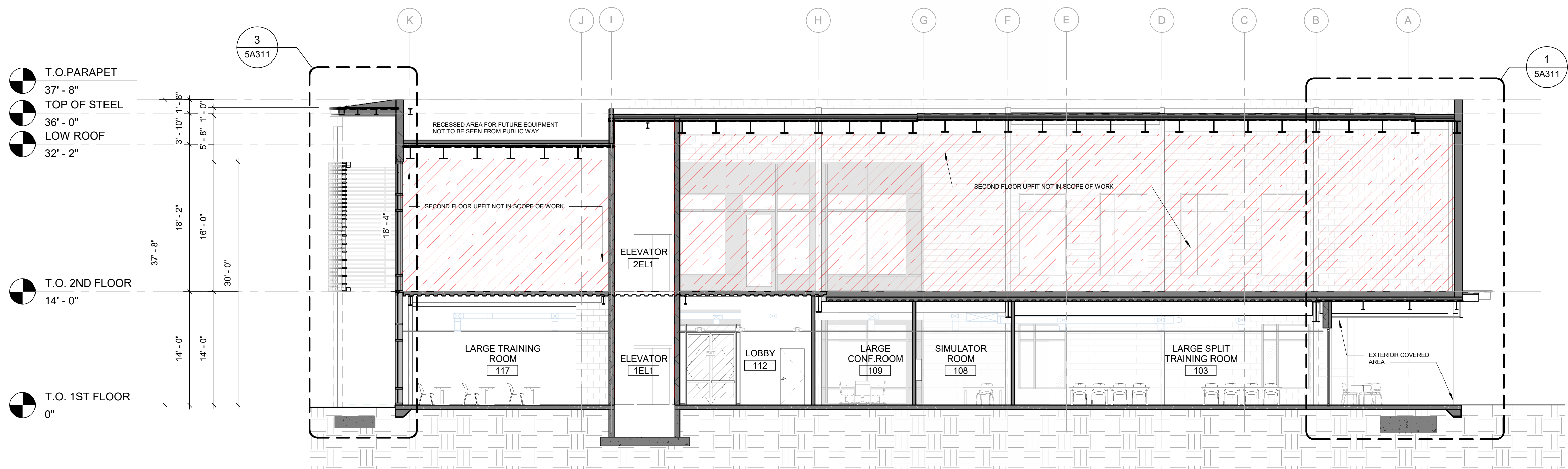
3 BUILDING SECTION C-C

5A301 Scale: 1/8" = 1'-0"



2 BUILDING SECTION B-B

5A301 Scale: 1/8" = 1'-0"



1 BUILDING SECTION A-A

5A301 Scale: 1/8" = 1'-0"